

Gi Gas Heater

WHY HEAT YOUR POOL?

Your swimming pool is fantastic for cooling the family down during the hot Summer months, but imagine being able to use your pool all year round. Invite your friends and family over for a birthday party and a swim in the cooler months. Exercise all year round and save on gym memberships. A Gi Gas Heater is one of the best investments you will ever make.

WHY CHOOSE A GAS HEATER?

ON DEMAND SWIMMING

A gas pool and spa heater has the capacity and energy to heat your pool fast. So fast in fact, that it does not have to be left on all the time. Fancy a swim this weekend? Turn your gas heater on Friday night or Saturday morning to achieve idyllic water temperature over the weekend, then simply turn it off on Sunday night. Got the impulse to use your spa? A correctly sized gas heater can heat your spa in an hour or less. Only gas can be turned on and off to suit your swimming or spa bathing needs, heating on demand and reducing your energy bills.

EFFICIENT USE OF ENERGY

Double row heat exchanger extracts more than 83% of the energy from the burner, making the Gi one of the most efficient heaters on the market. Combine the heat exchanger with a stainless steel expanded metal mesh burner and the compact Gi has less materials, resulting in minimal wasted heat which speeds up the heating process.

COMPACT SIZE

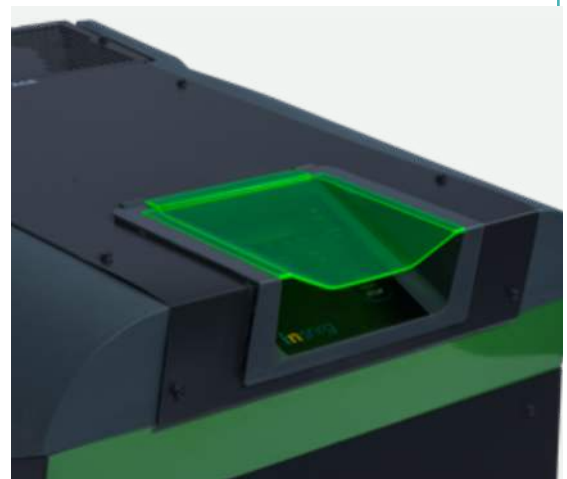
The Gi gas heater has one of the smallest footprints reducing the valuable real estate taken by your pool equipment. Installation is easy, with reversible headers to minimise plumbing space and cost.

DURABLE

Made from long life recyclable plastics, stainless steel internals and high grade components, Gi Gas Heater will last years providing trouble free enjoyment and pleasure in your pool or spa.

SMALL FOOTPRINT

Your Gas Heater has a small footprint - providing you with greater flexibility on installation.



The Gi Gas Heater is available with various options to get the best performance for your individual circumstances.

Natural or Propane Gas?

Each Gas heater is available in **Natural** or **Propane** models, so you don't need to have a towns gas supply to get the most from your investment.

Indoor or Outdoor?

The Gi Gas Heater is supplied to suit outdoor installation, however a simple conversion enables it to be installed indoors with up to 18m (60ft) of 125mm (5in) flue. The recommended flue is small in diameter making installation easy and roof or wall penetrations less invasive (flue kits must be ordered separately and installed by an authorised person).



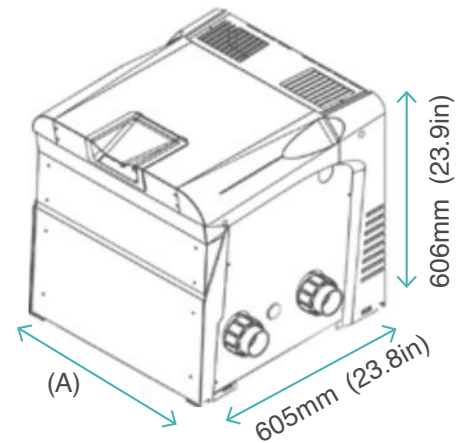
CONNECTED

Your heater is easily connected to Insnrg's inTouch control system allowing control at your fingertips on any smart device. Add the Insnrg Internet Portal to your system and you will be able to connect anywhere in the world using your home network. Imagine the peace of mind of receiving alerts from your pool or being able to monitor and control from wherever you are.

Require free intouch app. iOS & Android compatible.



DIMENSIONS & SPECS



RELAX, YOU'RE COVERED

Your Gi Gas heater comes complete with a **5 year cabinet** and **2 year component warranty**.

| MODEL | Gi 160 | Gi 265 | Gi 420 |
|----------------|---------|---------|---------|
| INPUT (MJ/h) | 160 | 265 | 420 |
| OUTPUT (kW/h) | 38 | 63 | 99 |
| INPUT (BTU/h) | 151,700 | 251,200 | 398,100 |
| OUTPUT (BTU/h) | 128,900 | 215,200 | 338,400 |
| WIDTH 'A' (mm) | 495 | 605 | 765 |
| WIDTH 'A' (in) | 19.5 | 23.8 | 30.1 |



info@discountpoolheating.com.au